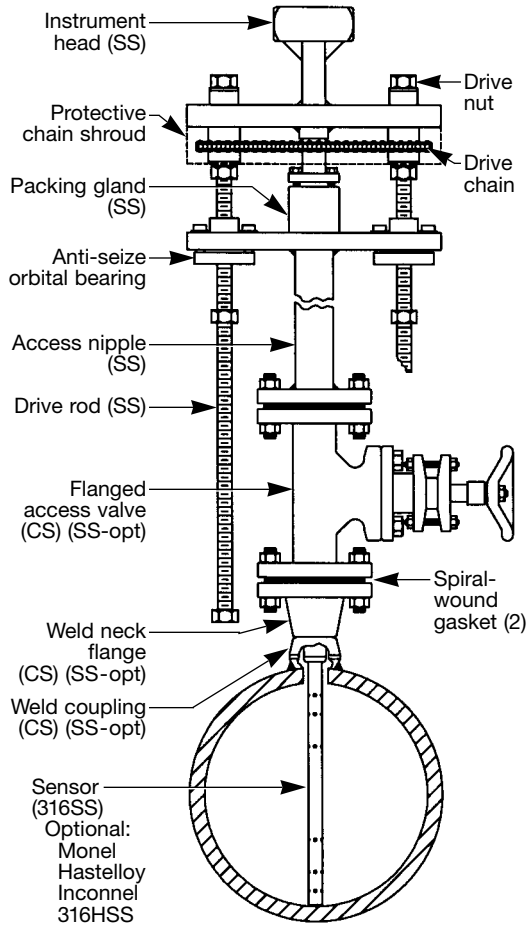


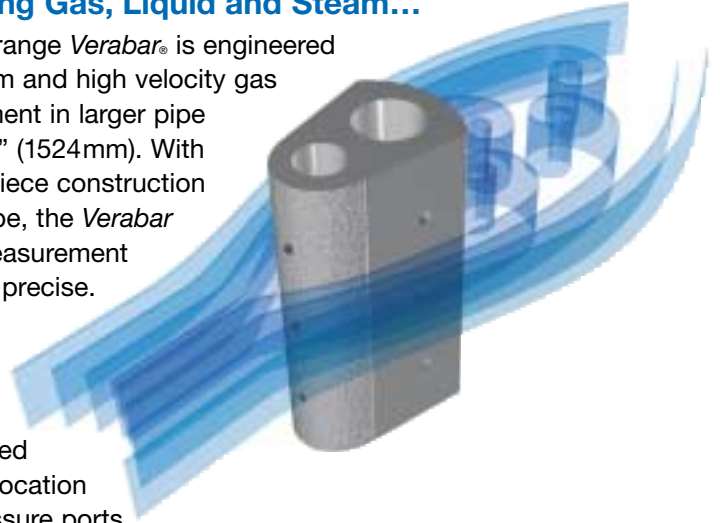
**V400D Synchro-Drive
(Standard)**



**The Most Accurate and Reliable Technology
for Measuring Gas, Liquid and Steam...**

The extended range Verabar® is engineered for liquid, steam and high velocity gas flow measurement in larger pipe sizes, up to 60" (1524mm). With its solid, one-piece construction and bullet shape, the Verabar makes flow measurement leak proof and precise.

The unique sensor shape reduces drag and flow induced vibration. The location of the low-pressure ports eliminates the potential for clogging and improves signal stability.



Model Specs	V400D
Pipe Connection	Flanged
Sensor Code	20
Sensor Diameter	2" (51mm)
ANSI Class	150#, 300#, 600#
Drive Rods	2
Pipe Size	12"-60" (300mm-1524mm)
Instrument Connection	1/2" NPT
Components Furnished	Weld coupling, weld neck flange, gaskets, studs & nuts
Flange Size	3"

Temperature Pressure Limits (ANSI Class)
150#
275 psig @ 100°F (19 Bars @ 38°C)
80 psig @ 800°F (5.5 Bars @ 426°C)
300#
720 psig @ 100°F (49.6 Bars @ 38°C)
330 psig @ 800°F (22.8 Bars @ 426°C)
600#
1440 psig @ 100°F (99.3 Bars @ 38°C)
660 psig @ 800°F (45.5 Bars @ 426°C)

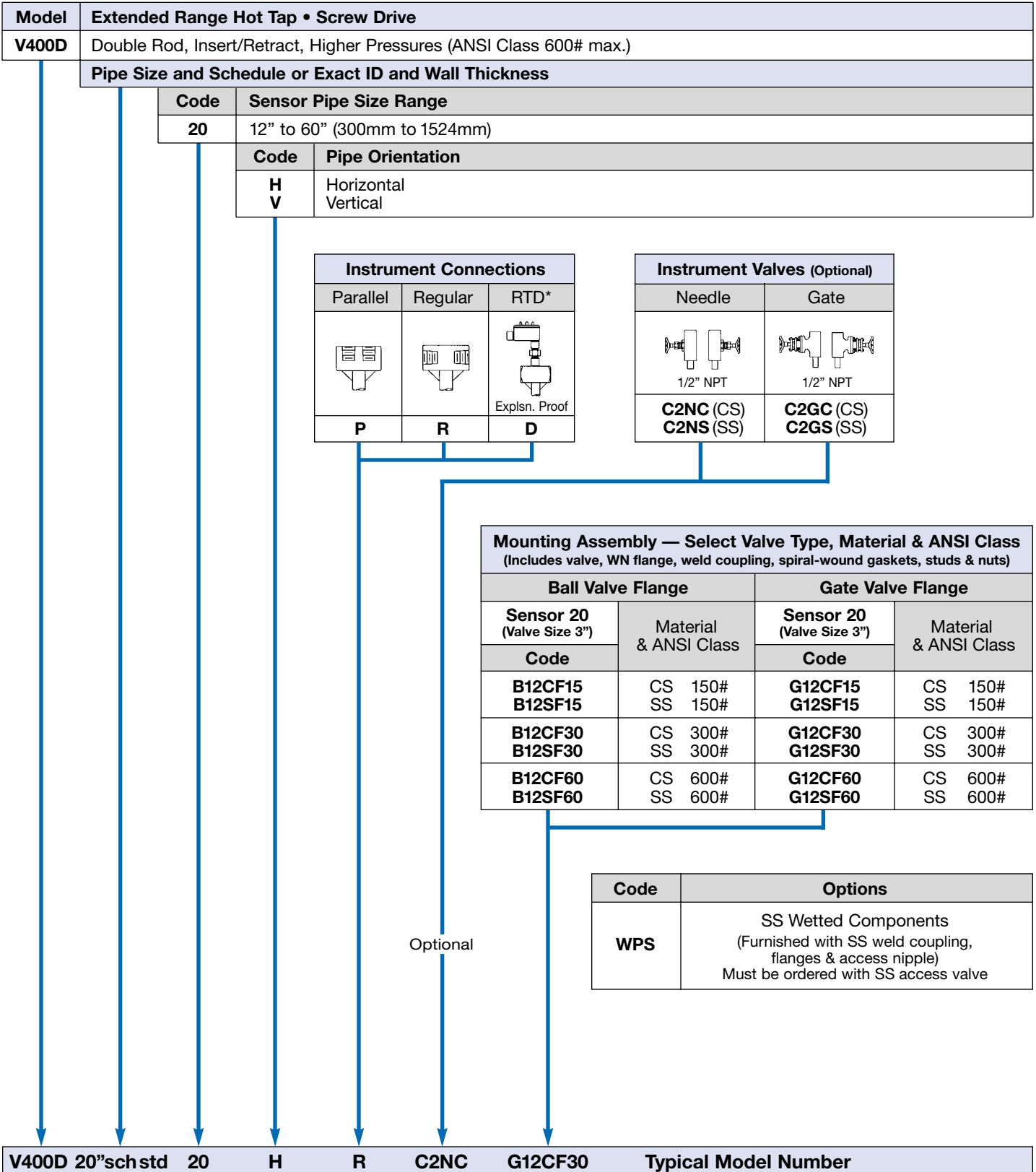
Synchro-Drive Description

Synchro-Drive is standard on all -20 sensors. Two drive rods are coupled together by a protected chain drive system. Turning either drive nut simultaneously rotates both rods.

Synchro-Drive Benefits

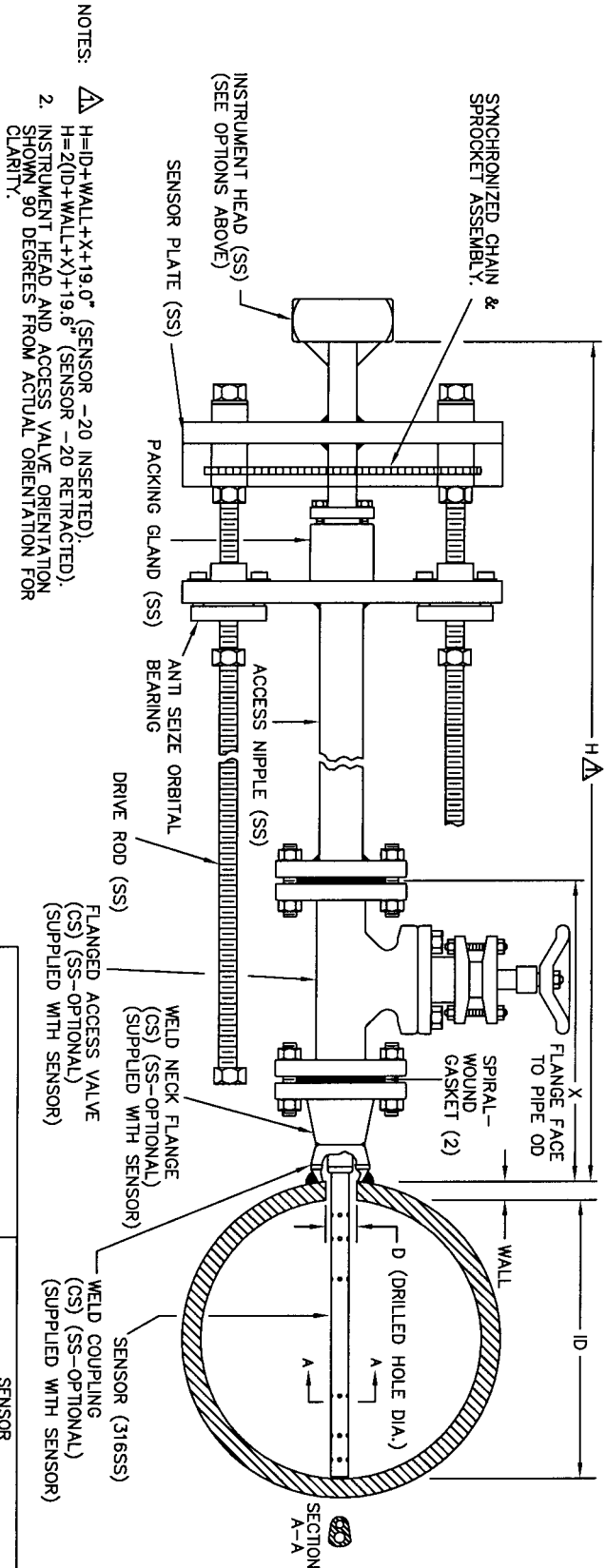
- 95% faster and easier insertion and retraction
- Equal load distribution over both rods maintains sensor alignment and eliminates binding

Ordering Information



* For high pressure (>500psig) and high temperature (>500°F) remote mount RTD in a thermowell is preferred.

CODE	RE MOUNT	PARALLEL	REGULAR	RTD	V ALV E S	NEEDLE	GATE
P	1/2" NPT					1/2" NPT C2NC (CS) C2NS (SS)	1/2" NPT C2GC (CS) C2GS (SS)



ITEM	SENSOR
SENSOR DIA.	2" (51mm)
FLANGE SIZE	3"
DIM 'D' DRILLED HOLE DIAMETER	2-1/8" (54mm)
DIM 'X' ANSI CLASS 150#	12.63" (320mm)
DIM 'X' ANSI CLASS 300#	16.13" (410mm)
DIM 'X' ANSI CLASS 600#	19.38" (492mm)

NOTES:
 1. H=ID+WALL+X+19.0" (SENSOR -20 INSERTED),
 H=2(ID+WALL+X)+19.6" (SENSOR -20 RETRACTED).
 2. INSTRUMENT HEAD AND ACCESS VALVE ORIENTATION SHOWN 90 DEGREES FROM ACTUAL ORIENTATION FOR CLARITY.

CUSTOMER: _____
 PROJECT: _____
 ORDER NO: _____
 TAG NO: _____
 PIPE SIZE & SCHEDULE: _____
 CATALOG NO: _____
 SERIAL NO: _____
 CERTIFIED BY: _____ DATE: _____

VERIS, inc.
 6315 MONARCH PARK PLACE
 NIWOT, CO 80503
 PHONE: 303-652-8550
 FAX: 303-652-8552

VERABAR MODEL: V400 DOUBLE ROD FLANGED SYNCHRO

DATE 7/10/03 DWG NO. SUB-5104
 SCALE NTS REV A PAGE 1 OF 1